

8505 (MTW)

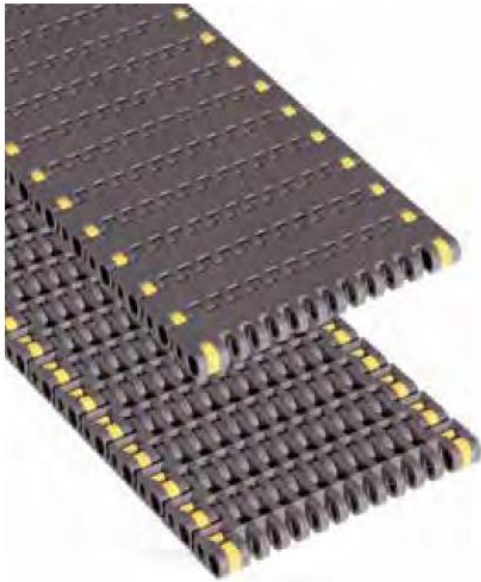
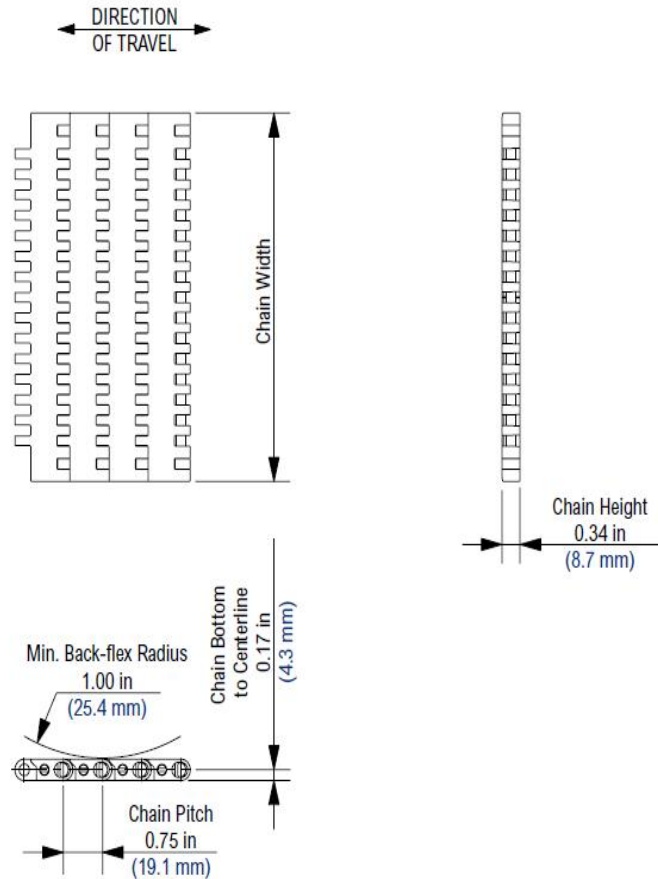


Photo shows 8505 Molded-to-Width (MTW) MatTop Chain molded in High Performance (HP) material.



Chain Information

desc	Chain Width		Number of Sprockets	Chain Strength	
	In	mm		lbs	N
2 1/3	2.33	59.2	1	225	1,001
3 1/4	3.25	82.6	1	240	1,068
85MM	3.35	85.0	1	240	1,068
4 1/2	4.50	114.3	1	360	1,601
6	6.00	152.4	2	500	2,224
7 1/2	7.50	190.5	2	625	2,780
12	12.00	304.8	4	2,000	8,896

Available Materials

Prefix	Chain Material	Standard Pin Material	Temperature						Approximate Weight		FDA Approval
			Fahrenheit			Celsius					
			min	max	wet	min	max	wet	lbs/ft ²	kg/m ²	
Standard Materials											
HP	High Performance	Polyester	-40	180	150	-40	82	66	1.82	8.89	Yes
KHT	Khaki High Temperature	Polypropylene	40	220	212	4	104	100	1.22	5.96	Yes
PSX	Platinum Series X	Polyester	-40	180	150	-40	82	66	1.82	8.89	Yes
Non-Standard Materials											
AS	Anti-Static	Polyester	0	180	NR	-18	82	NR	1.82	8.89	No
DKA	Abrasion Resistant Composite	Polyester	0	180	150	-18	82	66	1.82	8.89	Yes
FRPLUS	Flame Retardant Low Friction	Acetal	0	180	140	-18	82	60	2.00	9.77	No
HT	High Temperature	Polypropylene	40	220	212	4	104	100	1.22	5.96	Yes
LF	Low Friction	Polyester	-40	180	150	-40	82	66	1.82	8.89	Yes
PS	Platinum Series	Polyester	-40	180	150	-40	82	66	1.82	8.89	Yes
WHT	White High Temperature	Polypropylene	40	220	212	4	104	100	1.22	5.96	Yes
WLT	White Low Temperature	Polyethylene	-100	80	80	-73	27	27	1.22	5.96	Yes

Regulatory Information

The Food and Drug Administration (FDA) accepts certain materials for direct food contact. FDA approved material is compliant to FDA 21 CFR § 177.

Rexnord, MatTop, TwistLock, Platinum Series, Platinum Series X, HP, PS and PSX are trademarks of Rexnord Corporation.

All rights reserved.

U.S. Patents: 5335768, 4436200

Additional Notes

Non-Standard products are non-returnable. Minimum order quantity and additional setup charges may also apply.

Stocked in 160 pitch, 10 ft (3.048 m) length strands.

Open Area = 4.1%.

Stainless steel pins are available on a made-to-order basis.

Chain strength is based on acetal-based materials and listed at room temperature. NR = Not Recommended.

For additional material information, see material portfolio.

8505 (MTW) PT

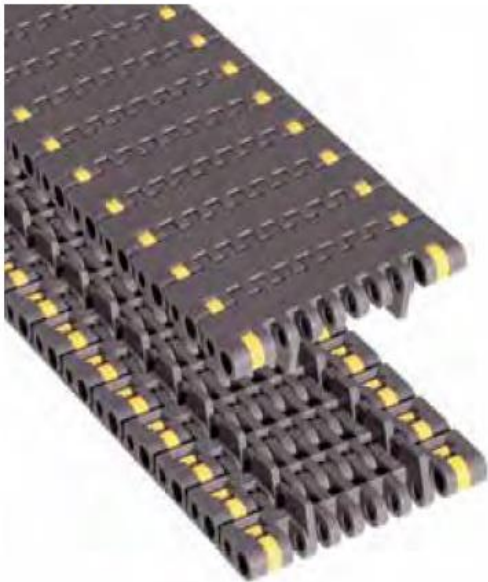
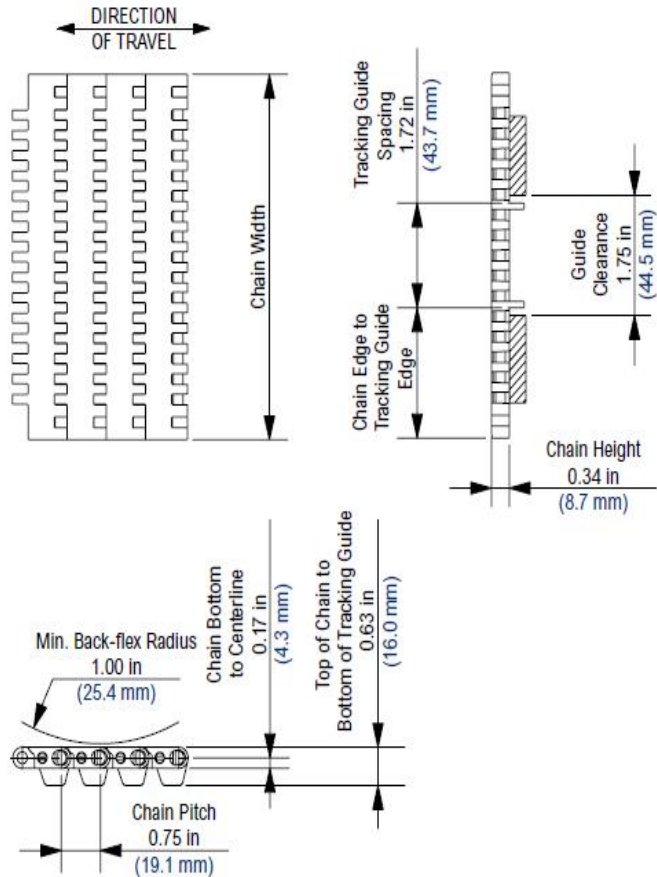


Photo shows 8505 Molded-to-Width (MTW) MatTop Chain with Positrack (PT) Tracking Guides molded in High Performance (HP) material.



Chain Information

Chain Width	Chain Width		Chain Edge to Tracking Guide Edge		Number of Sprockets	Chain Strength	
	desc	in	mm	in		mm	lbs
3 1/4	3.25	82.6	0.76	19.3	1	240	1,068
85MM	3.35	85.0	0.81	20.6	1	240	1,068
4 1/2	4.50	114.3	1.39	35.3	1	360	1,601
6	6.00	152.4	2.14	54.4	1	500	2,224
7 1/2	7.50	190.5	2.89	73.4	1	625	2,780

Available Materials

Prefix	Chain Material	Standard Pin Material	Temperature						Approximate Weight		FDA Approval
			Fahrenheit			Celsius					
			min	max		min	max		lbs/ft ²	kg/m ²	
				dry	wet		dry	wet			
Standard Materials											
HP	High Performance	Polyester	-40	180	150	-40	82	66	1.82	8.89	Yes
KHT	Khaki High Temperature	Polypropylene	40	220	212	4	104	100	1.22	5.96	Yes
PSX	Platinum Series X	Polyester	-40	180	150	-40	82	66	1.82	8.89	Yes
Non-Standard Materials											
AS	Anti-Static	Polyester	0	180	NR	-18	82	NR	1.82	8.89	No
FRPLUS	Flame Retardant Low Friction	Acetal	0	180	140	-18	82	60	2.00	9.77	No
DKA	Abrasion Resistant Composite	Polyester	0	180	150	-18	82	66	1.82	8.89	Yes
LF	Low Friction	Polyester	-40	180	150	-40	82	66	1.82	8.89	Yes
PS	Platinum Series	Polyester	-40	180	150	-40	82	66	1.82	8.89	Yes

Regulatory Information

The Food and Drug Administration (FDA) accepts certain materials for direct food contact. FDA approved material is compliant to FDA 21 CFR § 177.

Rexnord, MatTop, Positrak, TwistLock, Platinum Series, Platinum Series X, HP, PS and PSX are trademarks of Rexnord Corporation.

All rights reserved.

U.S. Patents: 5335768, 4436200

Additional Notes

Non-Standard products are non-returnable. Minimum order quantity and additional setup charges may also apply.

Stocked in 160 pitch, 10 ft (3.048 m) length strands.

Open Area = 4.1%.

Stainless steel pins are available on a made-to-order basis.

Chain strength is based on acetal-based materials and listed at room temperature. NR = Not Recommended.

For additional material information, see material portfolio.

8505 DTS PT

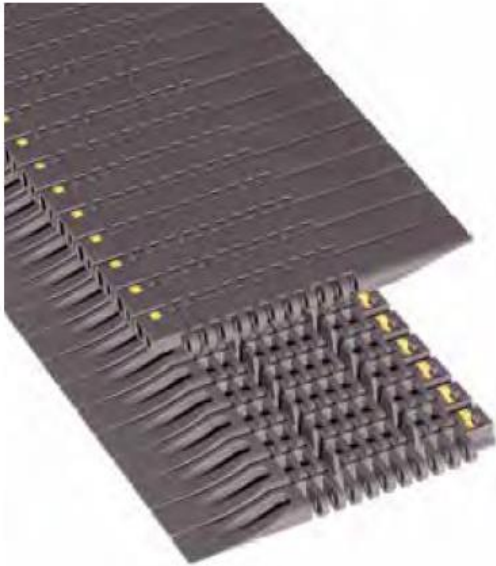
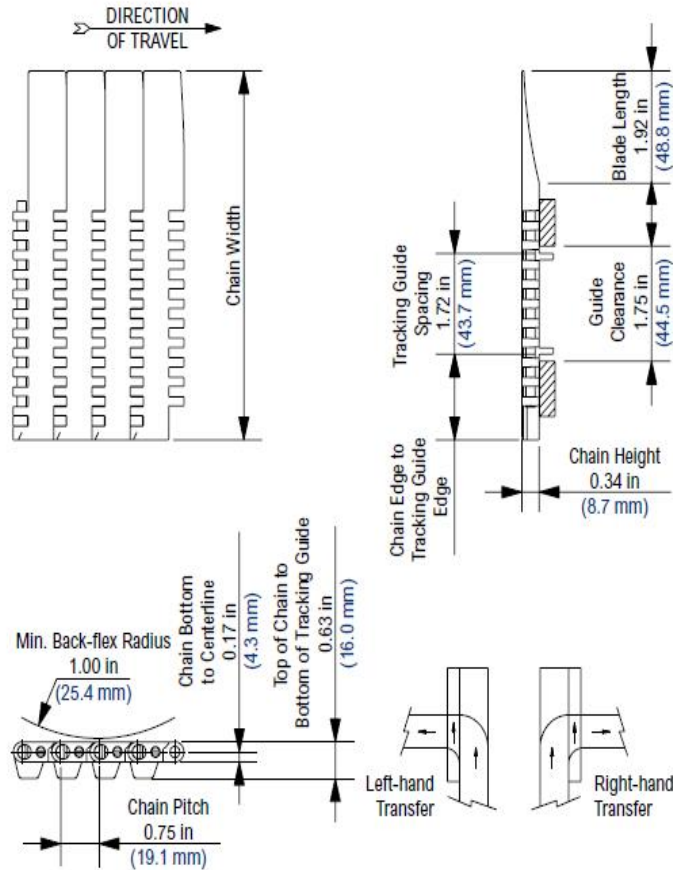


Photo shows 8505 MatTop Chain with DynamicTransfer System (DTS) and Positrack (PT) Tracking Guides molded in High Performance (HP) material.

Chain Information

desc	Chain Width		Chain Edge to Tracking Guide Edge		Number of Sprockets	Chain Strength	
	in	mm	in	mm		lbs	N
4 1/2	6.30	160.0	1.47	37.3	1	360	1,601
7 1/2	9.30	236.2	2.83	71.9	1	600	2,669



Available Materials

Prefix	Chain Material	Standard Pin Material	Temperature						Approximate Weight		FDA Approval
			Fahrenheit			Celsius					
			min	max	dry	wet	min	max	dry	wet	
Standard Materials											
HP	High Performance	Polyester	-40	180	150	-40	82	66	1.82	8.89	Yes
PSX	Platinum Series X	Polyester	-40	180	150	-40	82	66	1.82	8.89	Yes
Non-Standard Materials											
FRPLUS	Flame Retardant Low Friction	Acetal	0	180	140	-18	82	60	2.00	9.77	No
DKA	Abrasion Resistant Composite	Polyester	0	180	150	-18	82	66	1.82	8.89	Yes
KHT	Khaki High Temperature	Polypropylene	40	220	212	4	104	100	1.22	5.96	Yes
LF	Low Friction	Polyester	-40	180	150	-40	82	66	1.82	8.89	Yes

Regulatory Information

The Food and Drug Administration (FDA) accepts certain materials for direct food contact. FDA approved material is compliant to FDA 21 CFR § 177.

Rexnord, MatTop, Positrak, TwistLock, Platinum Series, Platinum Series X, HP, PS and PSX are trademarks of Rexnord Corporation.

All rights reserved.

U.S. Patents: 5335768, 5634550, 4436200

Additional Notes

Non-Standard products are non-returnable. Minimum order quantity and additional setup charges may also apply.

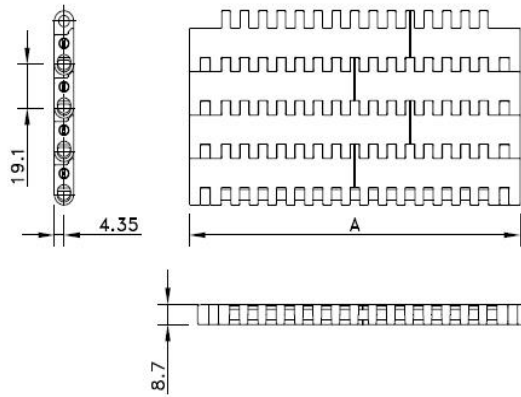
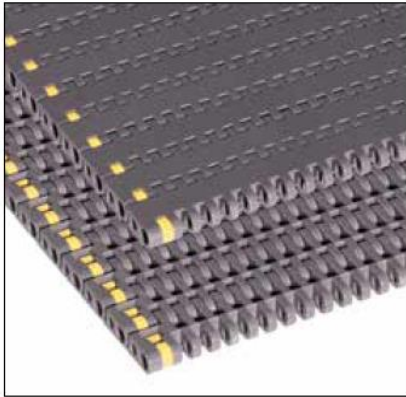
Stocked in 160 pitch, 10 ft (3.048 m) length strands.

Available in both left-hand and right-hand modules.

Chain strength is listed at room temperature. NR = Not Recommended.

For additional material information, see material portfolio.

Solid Top 8505



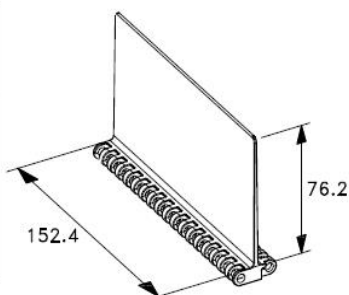
Assembly	Belt Type	Code Number*	Temperature range °C		Working Load (max.) N/m (21°C)	Weight kg/m ²	Backflex Radius (min.) mm
			Dry	Wet			
HP-Acetal with Polypropylene Pins							
Standard	HP 8505	I8505HPKxx	-40 to +80	-40 to +65	29000	8.89	25
DTS Left/Positrack	HP8505DTS-4.5IN_MTW_PT_LH	10028436					
DTS Right/Positrack	HP8505DTS-4.5IN_MTW_PT_RH	10028437					
WHT-Polypropylene with Polypropylene Pins							
Standard	WHT 8505	I8505HTKxx	5 to 105	5 to 105	16000	5.96	25
FRPLUS - High performance flame retardant polymer - Acetal Pins							
Standard	FRPLUS 8505	I8505FRPLUSKxx	-18 to +82	-18 to +60	16000	9.77	25

* In code numbers xx corresponds with the belt width (A). Standard widths of these belts begin at 6", with 6" increments up to 120"; special widths begin at 2½" with ½" increments. See also page 208.

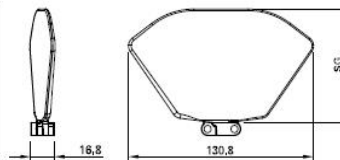
If you require flights, sideguards or tab guides, please describe the belt by choosing from the options listed in the 2nd column of the table:

Material	HP or WHT or FRPLUS	
Belt type	8505	
Width (A)	F1IN or F2IN or F3IN	Belts with flights have a minimal width of 6"
Flights	F3 or F2 or F1	Standard height of 3", 2", 1" or special height in mm
Pitch between flights	T..P	Flights on every .. th row; with sideguards it must correspond to an even number of rows
Flight side-indent	N.. (in inches)	Any indent with increments of 0.25IN is possible
Sideguards	S2IN or S1IN	Standard height of 2" or 1"
Tab guides	D..	TAB1 is only one row; TAB2 is two rows
Distance between Tabs		Minimal 3" with increments of ¾"
Pitch between Tabs	D..P	Must correspond to an even number of rows

Example: HP 8505 K16½ F3 T4P N2½ TAB2 D3 D4P is a 8505 Solid Top belt, made of dark grey acetal, width 16½", 3" high flights on every 4th row at 2½" from the sides, no sideguards and 2 rows of tabs with a distance in-between of 3" on every 4th row.

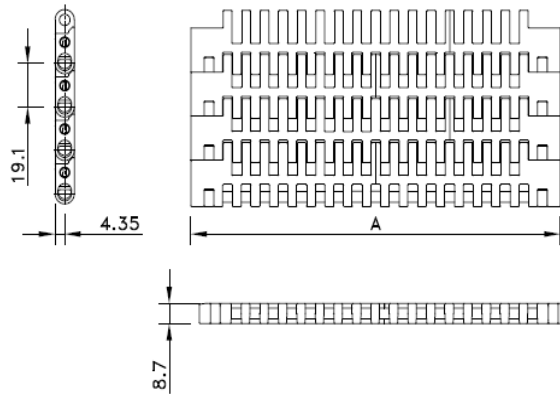
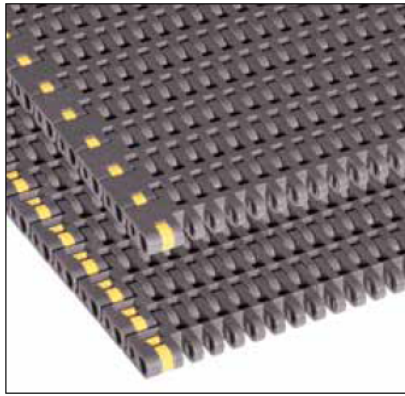


Sideguards 8500-series



Flight 8500-series for inclined applications

Perforated Top 8505



Assembly	Belt Type	Code Number*	Temperature range °C		Working Load (max.) N/m (21°C)	Weight kg/m ²	Backflex Radius (min.) mm
			Dry	Wet			
HP-Acetal with Polypropylene Pins							
Standard	HP 8505	I8506HPKxx	-40 to +80	-40 to +65	29000	8.89	25
DTS Left/Positrack	HP8505DTS-4.5IN_MTW_PT_LH	10028436					
DTS Right/Positrack	HP8505DTS-4.5IN_MTW_PT_RH	10028437					
WHT-Polypropylene with Polypropylene Pins							
Standard	WHT 8506	I8506WHTKxx	5 to 105	5 to 105	16000	5.96	25
FRPLUS - High performance flame retardant polymer - Acetal Pins							
Standard	FRPLUS	I8505FRPLUSKxx	-18 to +82	-18 to +60	16000	9.67	25

* In code numbers xx corresponds with the belt width (A). Standard widths of these belts begin at 6", with 6" increments up to 120"; special widths begin at 2 1/2" with 1/2" increments. See also page 208.

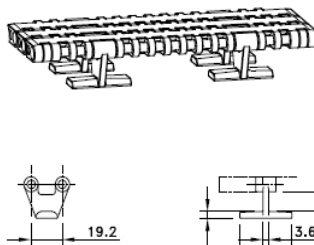
If you require flights, sideguards or tab guides, please describe the belt by choosing from the options listed in the 2nd column of the table:

Material	HP or WHT or FRPLUS	
Belt type	8506	
Width (A)	K - xx IN	Belts with flights have a minimal width of 6"
Flights	F3 or F2 or F1	Standard height of 3", 2", 1" or special height in mm
Pitch between flights	T..P	Flights on every .. th row; with sideguards it must correspond to an even number of rows
Flight side-indent	N.. (in inches)	Minimal 1 1/2" with 1/2" increments; in case of sideguards indents 1/2" or 2/4" only
Sideguards	S2IN / S3IN	Standard height of 3", 2" or 1"
Tab guides	TAB1 or TAB2	TAB1 is only one row; TAB2 is two rows
Distance between Tabs	D..	Minimal 3" with increments of 3/4"
Pitch between Tabs	D..P	Must correspond to an even number of rows

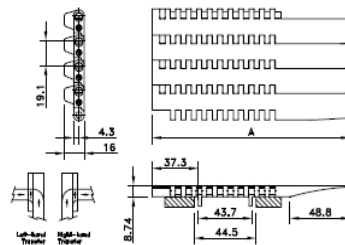
Example: WHT 8506 K7.50 SG2 N1 1/2 is a 8506 Perforated Top belt, made of white Polypropylene, width 7.5", 2" high sideguards at 1/2" from the sides. No flights, tab guides and DTS.



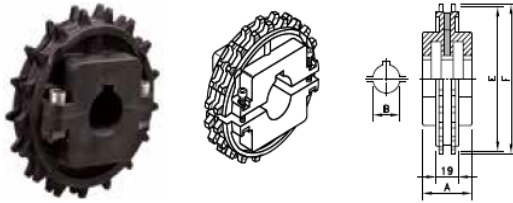
Tab guide 8500-series



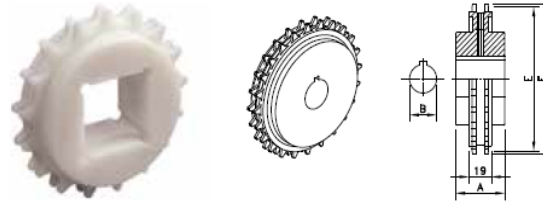
Dynamic transfer system 8500-series



Split Sprockets



Classic Sprockets



Sprocket Type	Code Number	Number of Teeth	Bore	Pitch Diameter	Outside Diameter	Hub Width
			B	E	F	A
			mm	mm	mm	mm

Split Sprockets

Round Bores

NS8500-17T_25MM_1KW_PA	10028670	17	25	104.7	105.4	39
NS8500-17T_30MM_1KW_PA	10028671	17	30			
NS8500-17T_35MM_1KW_PA	10331962	17	35			
NS8500-21T_25MM_1KW_PA	10028678	21	25	129.0	130.0	
NS8500-21T_30MM_1KW_PA	10028679	21	30			
NS8500-21T_35MM_1KW_PA	10331963	21	35			
NS8500-21T_40MM_1KW_PA	10028680	21	40	147.3	148.3	
NS8500-24T_25MM_1KW_PA	10028695	24	25			
NS8500-24T_30MM_1KW_PA	10028696	24	30			
NS8500-24T_35MM_1KW_PA	10331959	24	35	153.4	154.7	
NS8500-25T_25MM_1KW_PA	10028707	25	25			
NS8500-25T_30MM_1KW_PA	10019777	25	30			
NS8500-25T_35MM_1KW_PA	10331960	25	35			

Square Bores

NS8500-17T_25MM_S_PA	10331199	17	25	104.7	105.4	39
NS8500-17T_30MM_S_PA	10331599	17	30			
NS8500-17T_35MM_S_PA	10370600	17	35			
NS8500-21T_25MM_S_PA	10331200	21	25	129.0	130.0	
NS8500-21T_40MM_S_PA	10028681	21	40			
NS8500-21T_60MM_S_PA	10187289	21	60			
NS8500-24T_25MM_S_PA	10331201	24	25	147.3	148.3	
NS8500-24T_35MM_S_PA	10376561	24	35			
NS8500-25T_25MM_S_PA	10331202	25	25			
NS8500-25T_30MM_S_PA	10331602	25	30	153.4	154.7	
NS8500-25T_35MM_S_PA	10370601	25	35			

Box Order Quantity is 10 pieces.

Classic Sprockets

Round Bores

KU8500-24T_30MM_1KW_PA	10071597	24	30	147.3	148.3	35
KU8500-25T_50MM_1KW_PA	10332943	25	50	153.4	154.7	

Square Bores

KU8500-17T_40MM_1KW_PA	10332361	17	40	104.7	105.4	35
KU8500-25T_40MM_1KW_PA	10332363	25	40	153.4	154.7	