

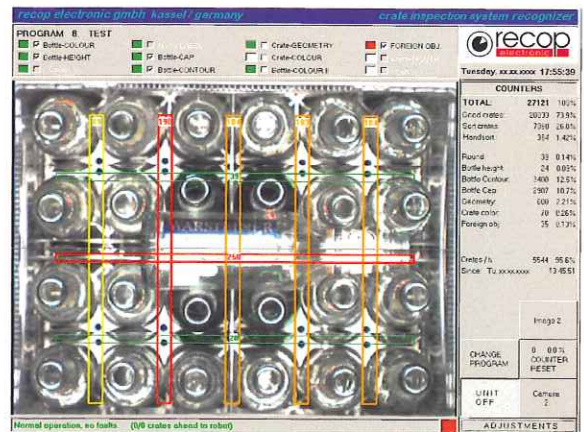


Inspection and sorting units Reject and diverting systems

- product overview -



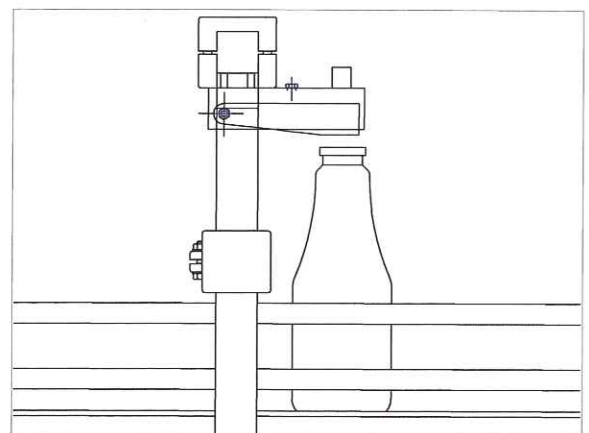
Crate logo identification '812'



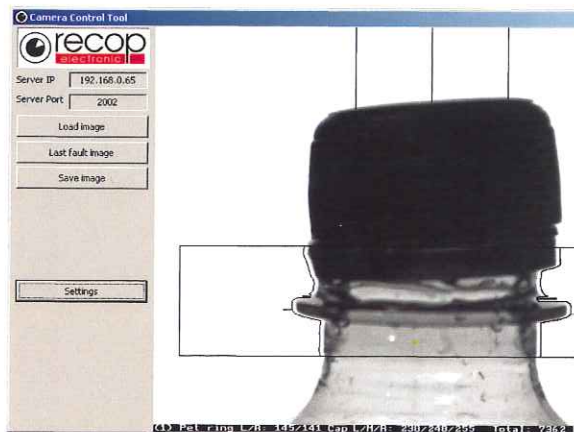
Crate inspection '831' (glass)



HF-fill level inspection '201'



Vacuum inspection '350'



Closure inspection '312'



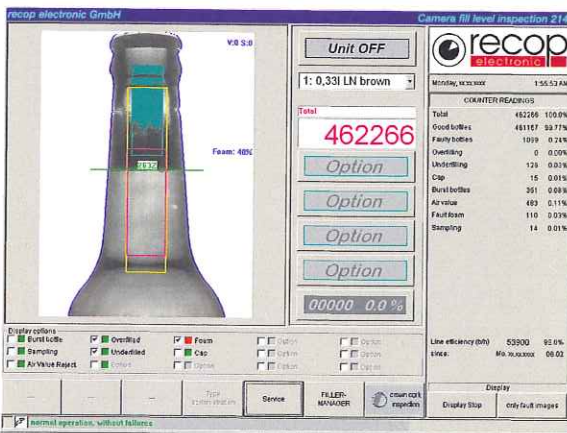
Crown Cork inspection '321'



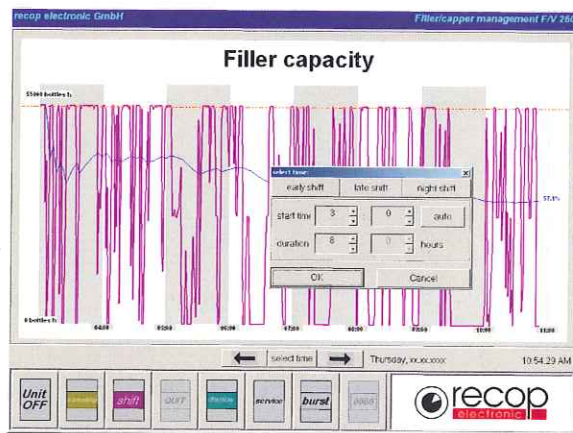
Crate inspection '831' (PET)



Segment rejector '158'



Camera fill level inspection '214'



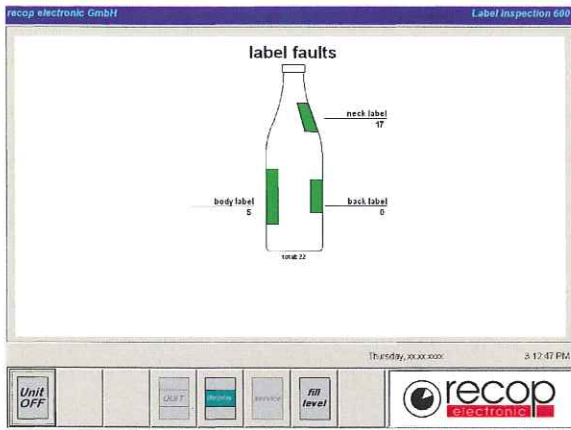
Filler/capper management '260'



Reject system '110'



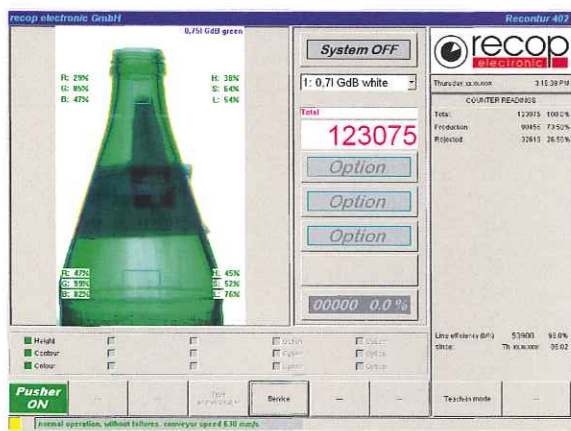
Linear rejector '132'



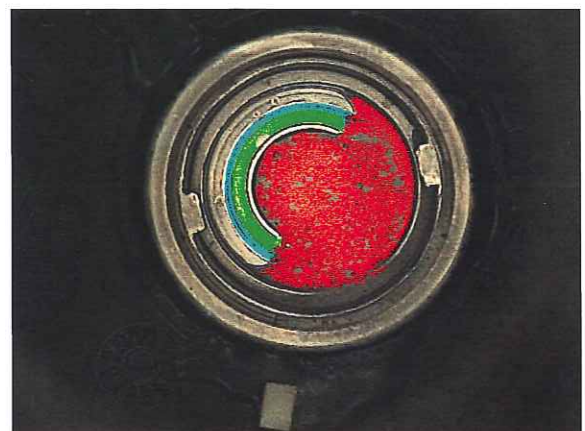
Label inspection '600'



Date inspection '675'



Bottle sorting system '402'



Fitting inspection '341'



Sorting robot '710'

... as well as:

- Empty crate inspections
- Full crate inspections
- Residual liquid detections
- Residual caustic detections
- Bottle reject pusher and crate reject rams
- Counter
- Custom-made products

recop electronic gmbh
 Otto-Hahn-Str. 12
 34123 Kassel / Germany
 Tel. +49 (0) 561 / 5708170
 Fax +49 (0) 561 / 5708199
 e-Mail: contact@recop.de
 Internet: www.recop.de

